

Charlotte

AUGUST/SEPTEMBER 2020

# HOME

DESIGN & DECOR®

## *Kitchen & Bath*

*PLUS:*  
KITCHEN  
CONFIDENTIAL

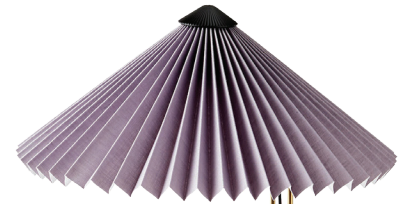
COLOR CRUSH:  
LOVELY LILAC

palette

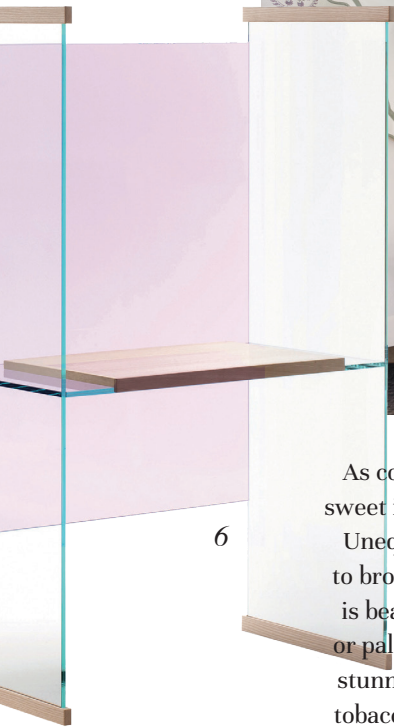
# LOVELY LILAC

This whimsical whisper of violet sprinkles a refreshingly sprightly spirit.

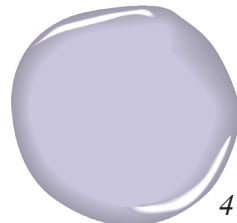
Written by Christina Spratt Spencer  
Produced by Ashley Hotham Cox



Interior designer Cathy Austin's bedroom design for the 2018 Southeastern Designer Showhouse & Gardens.



As confectionary and flowery as its namesake, this powdery pastel is singularly sugary sweet in its lineage of purple prose, distinguished by blithe and bashfully pink undertones. Unequivocally soft, feminine, and nostalgically youthful, it is a hue that can be peculiar to broach with its quiet, balmy confidence and jovial nature. Its faint and innocent charm is beautifully accentuated when coupled with crisp cotton whites, tranquil powder blue or pale rose, and even buttery sun-filled yellows. If your taste is more savory than sweet, stunningly sleek pairings of darker grounding neutrals like navy and charcoal, or earthy tobacco, olive, and deep plum allow for a harmonious depth with a fresh and playful pop.



1. Modern 6-Light Chandelier / \$4,350 / [abchome.com](http://abchome.com)
2. HAY Matin Table Lamp / \$195 / [store.moma.org](http://store.moma.org)
3. Charlie Sprout Koa Pillow / \$300 / [anthropologie.com](http://anthropologie.com)
4. Benjamin Moore French Lilac 1403 / \$79.99 per gallon of Aura / [magnoliapaint.com](http://magnoliapaint.com)
5. Clover Ottoman from Windsor Smith for Century / to the trade / [ahokelimited.com](http://ahokelimited.com)
6. Diapositive Lilac Desk by Ronan & Erwan Bouroullec for Glas Italia / \$6,040 / [artemest.com](http://artemest.com)

PHOTOGRAPHY BY EMILY FOLLOWILL